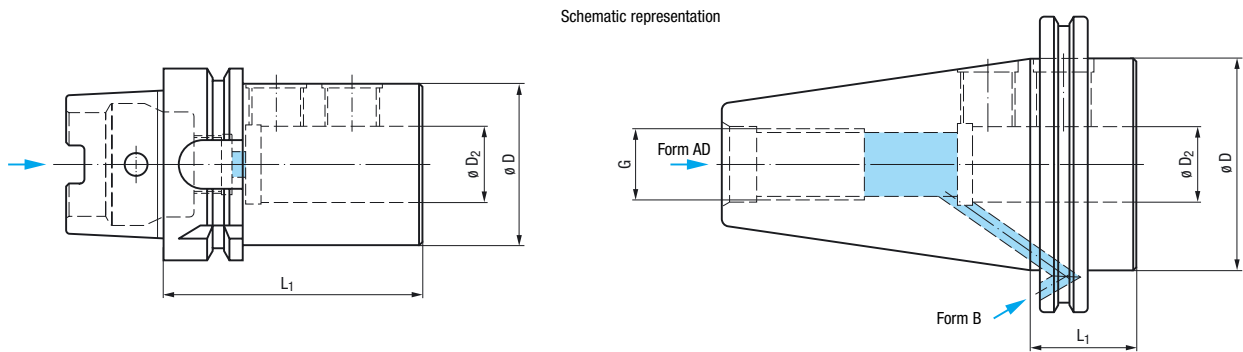


**Tap Holder
Accessories**

- *Adapter Shanks*
- *Coolant-Lubricant Tubes*
- *Collets*
- *Extensions*
- *Assembly
of Collet and Tool*
- *Clamping Nuts*
- *Sealing Disks*
- *Torque Wrenches*



With internal coolant-lubricant supply



For series KSN, GRN-NC and SWITCH-MASTER

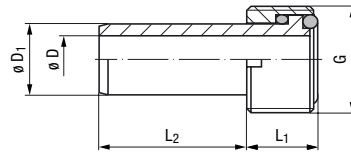
Type	Shank Size	mm				EDP Number	
		ø D ₂	ø D	G	L ₁		
DIN 69871 AD ¹⁾	SK 40	25	45.0	M16	35.0	F330006.01	★
	SK 50	25	70.0	M24	35.0	F330006.02	★
	SK 50	32	70.0	M24	35.0	F330006.05	★
DIN 69871 B ¹⁾	SK 40	25	45.0	M16	35.0	F330006.03	★
	SK 50	25	70.0	M24	35.0	F330006.04	★
	SK 50	32	70.0	M24	35.0	F330006.06	★
DIN 2080	SK 30	20	36.0	M12	34.0	F330005.03	★
	SK 40	25	44.0	M16	31.6	F330005.01	★
	SK 50	25	70.0	M24	16.0	F330005.02	★
ASME B5.50 metr.	SK 50	32	70.0	M24	16.0	F330005.04	★
	SK 40	25	45.0	M16	35.0	F330007.01	★
	SK 50	25	70.0	M24	35.0	F330007.02	★
ASME B5.50 UNC	SK 50	32	70.0	M24	35.0	F330007.06	★
	SK 40	25	44.5	5/8 - 11	35.0	F330007.03	●
	SK 50	25	70.0	1 - 8	35.0	F330007.04	●
JIS B 6339 (MAS 403 BT)	SK 50	32	70.0	1 - 8	35.0	F330007.05	●
	SK 40	25	45.0	M16	35.0	F330008.01	★
	SK 50	25	70.0	M24	44.0	F330008.02	★
DIN 69893 A ^{1) 2)}	SK 50	32	70.0	M24	44.0	F330008.03	★
	HSK-A40	20	52.0	M12 x 1	75.0	F33000C.02	★
	HSK-A40	25	65.0	M12 x 1	105.0	F33000C.03	★
	HSK-A50	20	52.0	M16 x 1	80.0	F33000C.04	★
	HSK-A50	25	65.0	M16 x 1	107.0	F33000C.05	★
	HSK-A50	32	77.0	M16 x 1	114.0	F33000C.06	★
	HSK-A63	25	53.0	M18 x 1	85.0	F33000C.07	★
	HSK-A63	32	72.0	M18 x 1	110.0	F33000C.08	★
	HSK-A80	25	65.0	M20 x 1.5	90.0	F33000C.09	★
	HSK-A80	32	72.0	M20 x 1.5	110.0	F33000C.10	★
HSK-A100	25	65.0	M24 x 1.5	100.0	F33000C.11	★	
HSK-A100	32	72.0	M24 x 1.5	96.0	F33000C.12	★	

¹⁾ With boring for data chip according to DIN 69873

²⁾ Coolant-lubricant tubes and wrenches see page 297, please order separately

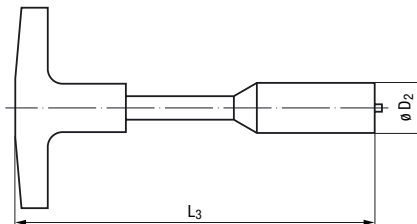
The locking screw is included in the delivery

Coolant-lubricant tubes



For Shank Size	mm					EDP Number	
	$\varnothing D$	$\varnothing D_1$	L_1	L_2	G		
HSK-A40	5.0	8	8	21.5	M12 x 1	F330049.02	★
HSK-A50	6.4	10	10	23.0	M16 x 1	F330049.03	★
HSK-A63	8.0	12	12	24.5	M18 x 1	F330049.04	★
HSK-A80	10.0	14	14	26.0	M20 x 1.5	F330049.05	★
HSK-A100	12.0	16	16	28.0	M24 x 1.5	F330049.06	★

Assembly wrenches



For Shank Size	mm		EDP Number	
	$\varnothing D_2$	L_2		
HSK-A40	11.0	111	F330099.02	★
HSK-A50	15.0	120	F330099.03	★
HSK-A63	17.0	122	F330099.04	★
HSK-A80	18.5	126	F330099.05	★
HSK-A100	22.0	141	F330099.06	★

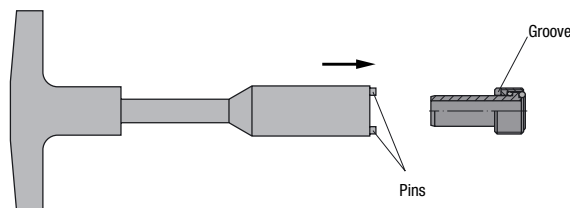
Use of coolant-lubricant tubes with hollow taper shanks according to DIN 69893 A

The coolant-lubricant tube is necessary for connecting the internal coolant-lubricant supply of the machine spindle with the hollow taper shank of the tap holder.

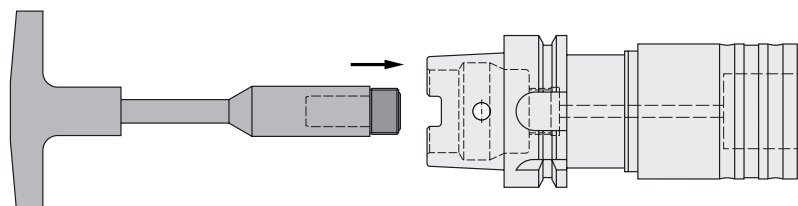
Please note: We recommend screwing the coolant-lubricant tube into the hollow taper shank even when tap holders without internal coolant-lubricant supply are used (e.g. type KSN); this will help to prevent damage to the hollow taper shank clamping system in case of unintentional switching on of the internal coolant-lubricant supply.

Assembly of the coolant-lubricant tube in the hollow taper (HSK) shank

- Put assembly wrench on the coolant-lubricant tube.
Important: Watch the position of the pins against the grooves!



- Screw coolant-lubricant tube into the shank.



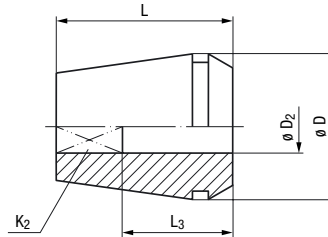
Metric

With square drive

ER_(GB)

IKZ

p_{max}
1400psi
(100bar)



Type		ER 11 GB		ER 16 GB		ER 20 GB			
		M2 - M8		M4 - M12		M4 - M12			
Collet Dimensions (mm)		Ø D		Ø D		Ø D			
		L		L		L			
DIN									
mm									
Ø D ₂	K ₂			EDP Number	•	EDP Number	•	EDP Number	•
					mm		mm		mm
					L ₃		L ₃		L ₃
2.5	2.1	M1 - M1.8	M3.5						
2.8	2.1	M2 - M2.6	M4	F0942011.2.8	12				
3.5	2.7	M3	M4.5 - M5	F0942011.3.5	14				
4.0	3.0	M3.5	M5.5	F0942011.4	14				
4.5	3.4	M4	M6	F0942011.4.5	14	F0942016.4.5	18	F0942020.4.5	18
6.0	4.9	M4.5 - M6	M8	F0942011.6	14	F0942016.6	18	F0942020.6	18
7.0	5.5	M7	M9 - M10			F0942016.7	18	F0942020.7	18
8.0	6.2	M8	M11			F0942016.8	22	F0942020.8	22
9.0	7.0	M9	M12			F0942016.9	22	F0942020.9	22
10.0	8.0	M10						F0942020.10	25

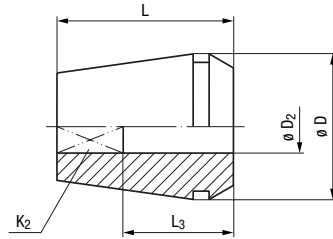
Type		ER 25 GB		ER 32 GB		ER 40 GB		ER 50 GB	
		M4 - M20		M4 - M20		M7 - M30		M30 - M48	
Collet Dimensions (mm)		Ø D		Ø D		Ø D		Ø D	
		L		L		L		L	
DIN									
mm									
Ø D ₂	K ₂			EDP Number	•	EDP Number	•	EDP Number	•
					mm		mm		mm
					L ₃		L ₃		L ₃
4.5	3.4	M4	M6	F0942025.4.5	18	F0942032.4.5	18		
6.0	4.9	M4.5 - M6	M8	F0942025.6	18	F0942032.6	18		
7.0	5.5	M7	M9 - M10	F0942025.7	18	F0942032.7	18	F0942040.7	18
8.0	6.2	M8	M11	F0942025.8	22	F0942032.8	22	F0942040.8	22
9.0	7.0	M9	M12	F0942025.9	22	F0942032.9	22	F0942040.9	22
10.0	8.0	M10		F0942025.10	25	F0942032.10	25	F0942040.10	25
11.0	9.0		M14	F0942025.11	25	F0942032.11	25	F0942040.11	25
12.0	9.0		M16	F0942025.12	25	F0942032.12	25	F0942040.12	25
14.0	11.0		M18	F0942025.14	25	F0942032.14	25	F0942040.14	25
16.0	12.0		M20	F0942025.16	25	F0942032.16	25	F0942040.16	25
18.0	14.5		M22 - M24					F0942040.18	25
20.0	16.0		M27					F0942040.20	28
22.0	18.0		M30					F0942040.22	28
25.0	20.0		M33						F0942050.22
28.0	22.0		M36						F0942050.25
32.0	24.0		M39 - M42						F0942050.28
36.0	29.0		M45 - M48						F0942050.32
									F0943050.36 ¹⁾

¹⁾ Type ER without square drive (Ø D = 52 mm)

Holder Access.

With square drive


Inch



ER_(GB)

IKZ

p_{max}
1400psi
(100bar)

Type		ER 11 GB		ER 20 GB		ER 32 GB		ER 40 GB			
		No.0 - No.6		No.8 - 1/2		1/4 - 3/4		1/4 - 1			
Collet Dimensions (inch)		ø D		ø D		ø D		ø D			
		L		L		L		L			
ASME		inch	inch	EDP Number	inch	EDP Number	inch	EDP Number	inch	EDP Number	inch
ø D ₂	K ₂										
0.141	0.110	No.0-No.6		F0942011.3.58	0.55						
0.168	0.131	No.8				F0942020.4.27	0.71				
0.194	0.152	No.10				F0942020.4.93	0.71				
0.220	0.165	No.12				F0942020.5.59	0.71				
0.255	0.191	1/4				F0942020.6.48	0.71	F0942032.6.48	0.71	F0942040.6.48	0.71
0.3125	0.234	1/16 NPT				F0942020.7.94	0.87	F0942032.7.94	0.87	F0942040.7.94	0.87
0.318	0.238	5/16				F0942020.8.08	0.87	F0942032.8.08	0.87	F0942040.8.08	0.87
0.323	0.242		7/16			F0942020.8.20	0.87	F0942032.8.20	0.87	F0942040.8.20	0.87
0.367	0.275		1/2			F0942020.9.32	0.87	F0942032.9.32	0.87	F0942040.9.32	0.87
0.381	0.286	3/8				F0942020.9.68	0.87	F0942032.9.68	0.87	F0942040.9.68	0.87
0.429	0.322		9/16					F0942032.10.90	0.98	F0942040.10.90	0.98
0.4375	0.328	1/8 NPT						F0942032.11.11	0.98	F0942040.11.11	0.98
0.480	0.360		5/8					F0942032.12.19	0.98	F0942040.12.19	0.98
0.542	0.406		1 1/1					F0942032.13.77	0.98	F0942040.13.77	0.98
0.5625	0.421	1/4 NPT						F0942032.14.29	0.98	F0942040.14.29	0.98
0.590	0.442		3/4					F0942032.14.99	0.98	F0942040.14.99	0.98
0.697	0.523		7/8							F0942040.17.70	0.98
0.800	0.600		1							F0942040.20.32	1.10

Further designs upon request

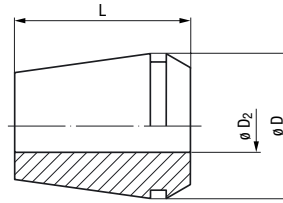
Metric


For the production of tap holes

ER

IKZ

p_{max}
1400psi
(100bar)



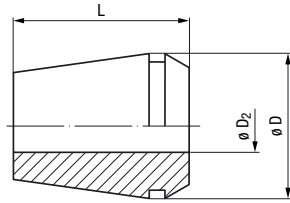
Type	ER 08		ER 11		ER 20		ER 32	
	1 - 4.5 mm		1.5 - 7 mm		3 - 11 mm		3 - 18 mm	
Collet Dimensions (mm)	$\varnothing D$	8.5	11.5		20.0		33.0	
	L	13.5	18.0		31.5		40.0	
mm $\varnothing D_2$	EDP Number		EDP Number		EDP Number		EDP Number	
1.5 - 1.0	F0943008.1.5	●						
2.0 - 1.5	F0943008.2	●	F0943011.2	●				
2.5 - 2.0	F0943008.2.5	●	F0943011.2.5	●				
3.0 - 2.5	F0943008.3	●	F0943011.3	●				
3.5 - 3.0	F0943008.3.5	●	F0943011.3.5	●				
4.0 - 3.5	F0943008.4	●	F0943011.4	●				
4.0 - 3.0					F0943020.4	●	F0943032.4	●
4.5 - 4.0	F0943008.4.5	●	F0943011.4.5	●				
5.0 - 4.5			F0943011.5	●				
5.0 - 4.0					F0943020.5	●	F0943032.5	●
6.0 - 5.5			F0943011.6	●				
6.0 - 5.0					F0943020.6	●	F0943032.6	●
7.0 - 6.5			F0943011.7	●				
7.0 - 6.0					F0943020.7	●	F0943032.7	●
9.0 - 8.0					F0943020.9	●	F0943032.9	●
11.0 - 10.0					F0943020.11	●	F0943032.11	●
12.0 - 11.0							F0943032.12	●
14.0 - 13.0							F0943032.14	●
16.0 - 15.0							F0943032.16	●
18.0 - 17.0							F0943032.18	●

Further designs upon request

Holder
Access.

For the production of tap holes


Inch



ER

IKZ

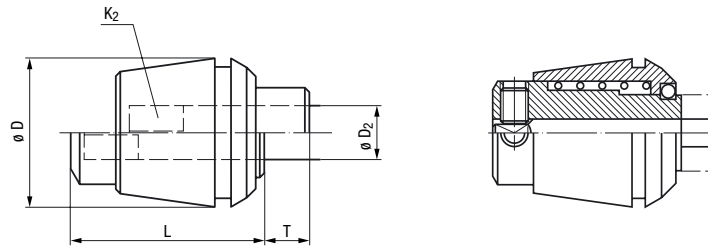
p_{max}
1400psi
(100bar)


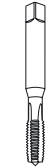

Type	ER 11		ER 20			
	0.1410 - 0.2550		0.1410 - 0.1680			
Collet Dimensions (inch)	ø D	0.453	0.787			
	L	0.709	1.240			
mm	EDP Number		EDP Number			
ø D ₂						
0.141	F0943011.4	●	F0943020.4	●		
0.168	F0943011.4.5	●	F0943020.5	●		
0.194	F0943011.5	●				
0.220	F0943011.6	●				
0.255	F0943011.6.5	●				

Metric

With square drive and length compensation on tension,
not suitable for internal coolant-lubricant supply.

PCM
ET1



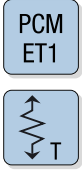
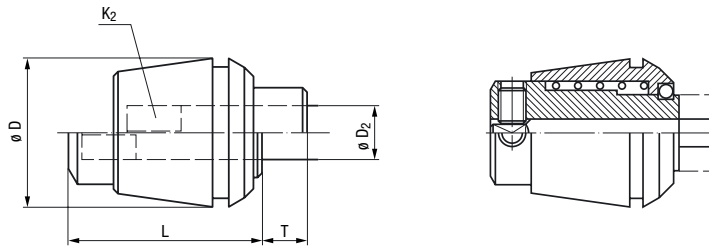
Type	PCM ET1-12		PCM ET1-20		PCM ET1-32		PCM ET1-40			
	M1 - M4		M1 - M10		M4 - M16		M4.5 - M20			
Length Compensation on Tension T	5.5		7.0		10.0		13.0			
Collet Dimensions (mm)	ϕD		11.5		21.0		33.0		41.0	
	L		21.5		31.0		43.0		54.0	
DIN			EDP Number	★	EDP Number	★	EDP Number	★	EDP Number	★
mm	ϕD_2	K_2								
2.5	2.1	M1 - M1.8	M3.5	F0945011.2.5		F0945020.2.5				
2.8	2.1	M2 - M2.6	M4	F0945011.2.8		F0945020.2.8				
3.5	2.7	M3	M4.5 - M5			F0945020.3.5				
4.0	3.0	M3.5	M5.5			F0945020.4				
4.5	3.4	M4	M6			F0945020.4.5		F0945032.4.5		
6.0	4.9	M4.5 - M6	M8			F0945020.6		F0945032.6		F0945040.6
7.0	5.5	M7	M9 - M10			F0945020.7		F0945032.7		F0945040.7
8.0	6.2	M8	M11					F0945032.8		F0945040.8
9.0	7.0	M9	M12					F0945032.9		F0945040.9
10.0	8.0	M10						F0945032.10		F0945040.10
11.0	9.0		M14					F0945032.11		F0945040.11
12.0	9.0		M16					F0945032.12		F0945040.12
14.0	11.0		M18							F0945040.14
16.0	12.0		M20							F0945040.16


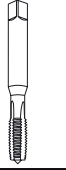
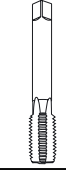
The threading tool is clamped by means of 4 worm screws on the square.
Due to the length compensation, sealing disks cannot be used in the clamping nut.

Further designs upon request

With square drive and length compensation on tension, not suitable for internal coolant-lubricant supply.

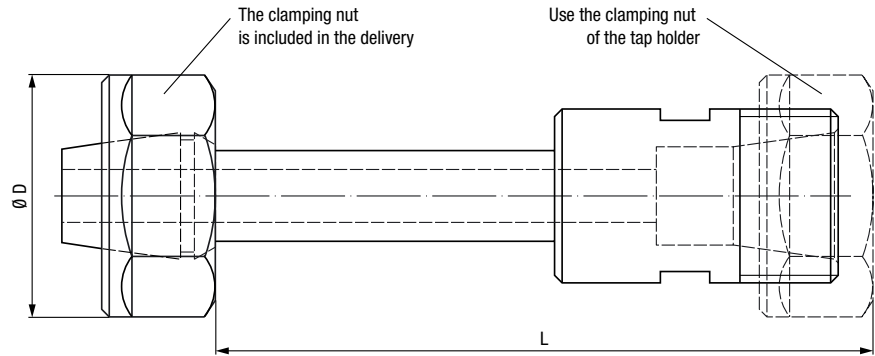
Inch



Type	PCM ET1-20		PCM ET1-32		PCM ET1-40			
	1/4		1/4 - 5/8		1/4 - 7/8			
Length Compensation on Tension T	0.276		0.394		0.512			
Collet Dimensions (inch)	ø D		0.827		1.299		1.614	
	L		1.220		1.693		2.126	
			EDP Number	*	EDP Number	*	EDP Number	*
inch								
ø D₂	K₂							
0.255	0.191	1/4	F0945020.6.48		F0945032.6.48		F0945040.6.48	
0.318	0.238	5/16			F0945032.8.08		F0945040.8.08	
0.381	0.286	3/8			F0945032.9.68		F0945040.9.68	
0.323	0.242				F0945032.8.20		F0945040.8.20	
0.367	0.275				F0945032.9.32		F0945040.9.32	
0.429	0.322	7/16			F0945032.10.90		F0945040.10.90	
0.480	0.360	9/16			F0945032.12.19		F0945040.12.19	
0.590	0.442	5/8					F0945040.14.99	
0.697	0.523	3/4					F0945040.17.70	
0.800	0.600	7/8					upon request	
0.896	0.672	1					upon request	
1.021	0.766	1 1/8					upon request	
1.108	0.831	1 1/4					upon request	
1.233	0.925	1 3/8					upon request	
1.430	1.072	1 1/2					upon request	
		1 3/4					upon request	

The threading tool is clamped by means of 4 worm screws on the square. Due to the length compensation, sealing disks cannot be used in the clamping nut.


Metric / Inch



ER_(GB)

IKZ

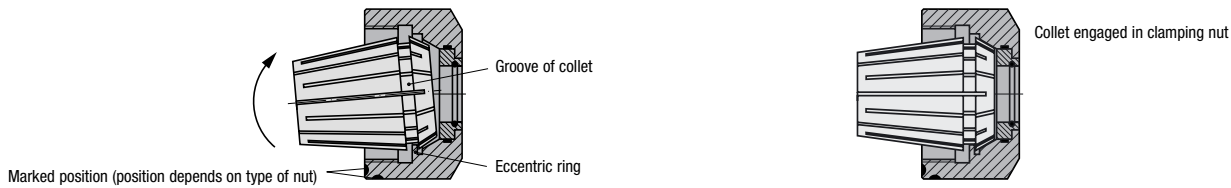
p_{max}
700psi
(50bar)

Type		Collet Size	Ø D		L		EDP Number	
			mm	inch	mm	inch		
VL-ER11-45	M2 - M7 (No.0 - No.12)	ER 11	19	0.7480	45	1.7717	F3398907	★
VL-ER11-95	M2 - M7 (No.0 - No.12)	ER 11	19	0.7480	95	3.7402	F3398908	★
VL-ER20-62	M4 - M12 (No.8 - 3/8)	ER 20	34	1.3386	62	2.4409	F3398905	★
VL-ER20-112	M4 - M12 (No.8 - 3/8)	ER 20	34	1.3386	112	4.4094	F3398906	★
VL-ER32-64	M8 - M20 (5/16 - 13/16)	ER 32	50	1.9685	64	2.5197	F3398909	★
VL-ER32-98	M8 - M20 (5/16 - 13/16)	ER 32	50	1.9685	98	3.8583	F3398910	★

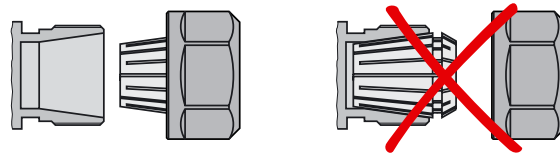
Application range:

In combination with tap holders type KSN-Synchro and KSN-Softsynchro®

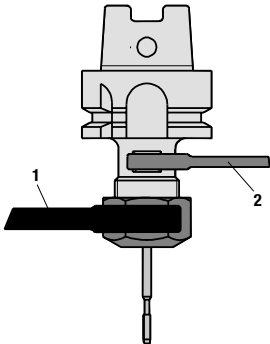
1. Insert collet into the clamping nut.
2. Tilt collet.
The groove of the collet must engage in the eccentric ring of the clamping nut at the marked position.
Tilt collet in opposite direction until it clearly engages. Collet is flush with the clamping nut or the sealing disk.



3. Screw the engaged collet with the clamping nut manually onto the thread of the holder.
Important: Only mount clamping nuts with correctly engaged collet!



4. Insert tap.
Important: If collet and tap are provided with a square, the tap must be brought into such a position that it can be pushed into the square seat of the collet.
5. Tighten the clamping nut with the wrench. Observe the max. torque values in the table.



Type	Max. Tightening Force
Hi-Q/ERM 11	11 ft lbs / 15 Nm
Hi-Q/ER 11	13 ft lbs / 18 Nm
Hi-Q/ERMC 11	11 ft lbs / 15 Nm
Hi-Q/ERMC 16	22 ft lbs / 30 Nm
Hi-Q/ERMC 20	26 ft lbs / 35 Nm
Hi-Q/ERMC 25	30 ft lbs / 40 Nm
Hi-Q/ERC 11	13 ft lbs / 18 Nm
Hi-Q/ERC 20	30 ft lbs / 40 Nm
Hi-Q/ERC 25	96 ft lbs / 130 Nm
Hi-Q/ERC 32	125 ft lbs / 170 Nm
Hi-Q/ERC 40	162 ft lbs / 220 Nm
Hi-Q/ERBC 50	221 ft lbs / 300 Nm

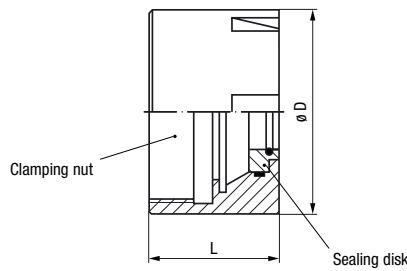
The specifications apply to collets type ER-GB. We recommend a tightening torque of 80% of the max. torque. For torque wrenches, see page 309.

Important: In order to avoid damage to the holder, please counter with open-ended spanner 2 while tightening the clamping nut with wrench 1.

Clamping Nuts

IKZ
 p_{max}
 1400psi
 (100bar)

Hi-Q/ERMC 16-25



Type		Hi-Q/ERMC 16	Hi-Q/ERMC 20	Hi-Q/ERMC 25			
Clamping Nut Dimensions (mm)	$\varnothing D$	22.0	28.0	35.0			
	L	22.0	24.0	25.0			
for Collet	Sealing Disk	EDP Number	EDP Number	EDP Number			
		ER 16 (GB) DS/ER 16	F0943516 *	F0943520 *	F0943525 *		
		ER 20 (GB) DS/ER 20					
		ER 25 (GB) DS/ER 25					

Sealing disks see page 307, please order separately

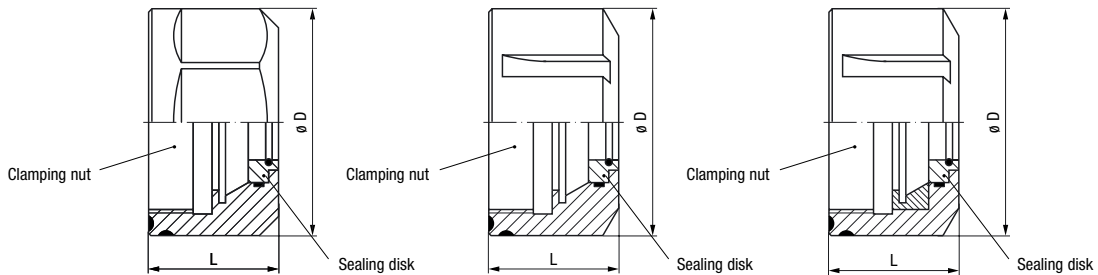
Clamping Nuts

IKZ
 p_{max}
 1400psi
 (100bar)

Hi-Q/ERC 20

Hi-Q/ERC 25-40

Hi-Q/ERBC 50

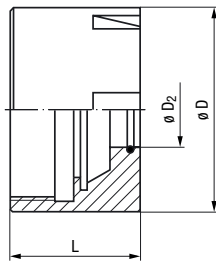


Type		Hi-Q/ERC 20	Hi-Q/ERC 25	Hi-Q/ERC 32	Hi-Q/ERC 40	Hi-Q/ERBC 50	
Clamping Nut Dimensions (mm)	$\varnothing D$	35.0	42.0	50.0	63.0	77.7	
	L	25.0	25.0	29.0	31.0	42.5	
for Collet	Sealing Disk	EDP Number	EDP Number	EDP Number	EDP Number	EDP Number	
		ER 20 (GB) DS/ER 20	F0940720 *	F0940725 *	F0940732 *	F0940740 *	F0941150 *
		ER 25 (GB) DS/ER 25					
		ER 32 (GB) DS/ER 32					
		ER 40 (GB) DS/ER 40					
		ER 50 (GB) DS/ER 50					

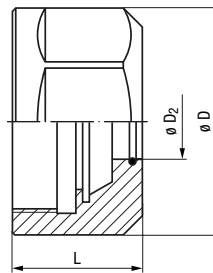
Sealing disks see page 307, please order separately

Clamping Nuts

Hi-Q/ERMC 11



Hi-Q/ERC 11



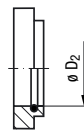
IKZ
p_{max}
1400psi
(100bar)

Type					Hi-Q/ERMC 11			Hi-Q/ERC 11
Clamping Nut Dimensions (mm)					ø D	16.0		19.0
					L	14.6		14.6
DIN	mm				EDP Number			EDP Number
	ø D ₂	K ₂	for Collet					
	6	4.9	M4.5 - M6	M8	F0943511.6 F0943511.7	★		F0940711.6 F0940711.7
	7	5.5	M7	M9 - M10		★		

Further designs upon request

Sealing Disks

DS/ER

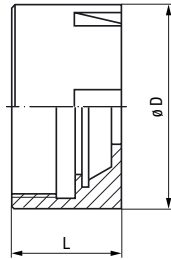


Type					DS/ER 16	DS/ER 20	DS/ER 25	DS/ER 32	DS/ER 40	DS/ER 50
ASME	inch		DIN	mm		EDP Number	EDP Number	EDP Number	EDP Number	EDP Number
	ø D ₂			ø D ₂						
0.141	No. 1 - 6		4.0	M3.5	M5.5	F0941516.4	●			
0.168	No. 8		4.5	M4	M6	F0941516.4.5	●	F0941520.4.5	●	F0941525.4.5
0.194	No. 10					F0941516.5	●	F0941520.5	●	F0941525.5
0.220	No. 12		6.0	M4.5 - M6	M8	F0941516.6	●	F0941520.6	●	F0941525.6
0.255	1/4					F0941516.6.5	●	F0941520.6.5	●	F0941525.6.5
			7.0	M7	M9 - M10	F0941516.7	●	F0941520.7	●	F0941525.7
0.3125	1/16 NPT		8.0	M8	M11	F0941516.8	●	F0941520.8	●	F0941525.8
0.318	5/16					F0941516.8.5	●	F0941520.8.5	●	F0941525.8.5
0.323		7/16				F0941516.8.5	●	F0941520.8.5	●	F0941525.8.5
			9.0	M9	M12	F0941516.9	●	F0941520.9	●	F0941525.9
0.367		1/2				F0941516.9.5	●	F0941520.9.5	●	F0941525.9.5
0.381	3/8		10.0	M10		F0941516.10	●	F0941520.10	●	F0941525.10
0.429		9/16						F0941525.11	●	F0941532.11
0.4375	1/8 NPT							F0941525.11.5	●	F0941532.11.5
			12.0		M16			F0941525.12	●	F0941532.12
		5/8						F0941525.12.5	●	F0941532.12.5
			14.0		M18			F0941525.14	●	F0941532.14
0.5625	1/4 NPT							F0941525.14.5	●	F0941532.14.5
0.590		3/4						F0941525.15	●	F0941532.15
			16.0		M20			F0941525.16	●	F0941532.16
0.6875		1/2 NPT								F0941540.17.5
0.697		7/8	18.0		M22 - M24					F0941540.18
0.700	3/8 NPT									F0941540.18
			20.0		M27					F0941540.20
0.800		1								F0941540.20.5
			22.0		M30					F0941540.22
			25.0		M33					● F0941550.22 ★
			28.0		M36					● F0941550.25 ★
			32.0		M39 - M42					● F0941550.28 ★
			36.0		M45 - M48					● F0941550.32 ★
										● F0941550.36 ★

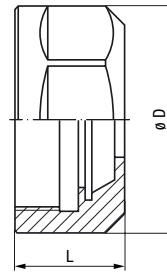
● In stock ★ Allow 7 days for delivery

Clamping Nuts

Hi-Q/ERM 11



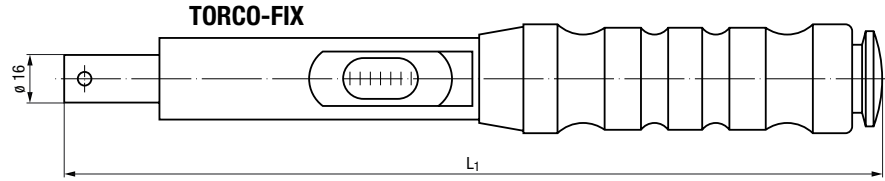
Hi-Q/ER 11



Type		Hi-Q/ERM 11		Hi-Q/ER 11			
Clamping Nut Dimensions (mm)	ø D	16.0		19.0			
	L	12.0		11.3			
		EDP Number		EDP Number			
for Collet							
ER 11 (GB)		F0940311	★	F0940911	★		
ER 11 (GB)							

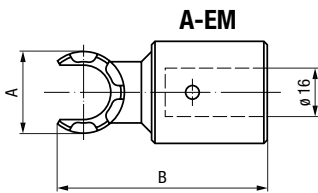
Further designs upon request

Torque Wrenches

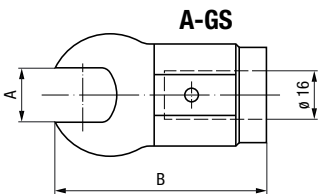


Type	Torque	inch L_1	EDP Number	
TORCO-FIX I	4 - 37 ft lbs (5 - 50 Nm)	13.189	F0908005	★
TORCO-FIX II	15 - 148 ft lbs (20 - 200 Nm)	18.307	F0908020	★
TORCO-FIX III	44 - 221 ft lbs (60 - 300 Nm)	22.244	F0908060	★

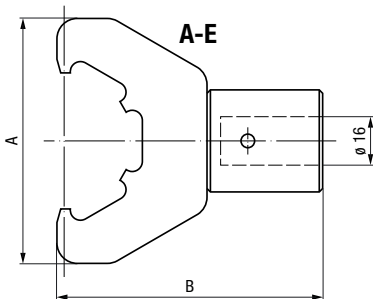
Shell-Type Wrenches



Type	For Clamping Nut	TORCO-FIX	inch		EDP Number	
			A	B		
A-E 11 M	Hi-Q/ERMC 11, Hi-Q/ERM 11	I	0.661	2.126	F0908500.AE11M	★
A-E 16 M	Hi-Q/ERMC 16	I, II	0.886	2.205	F0908500.AE16M	★
A-E 20 M	Hi-Q/ERMC 20	I, II	1.142	2.283	F0908500.AE20M	★
A-E 25 M	Hi-Q/ERMC 25	I, II	1.417	2.756	F0908500.AE25M	★



Type	For Clamping Nut	TORCO-FIX	inch		EDP Number	
			A	B		
A-GS 17	Hi-Q/ERC 11, Hi-Q/ER 11	I	0.669	2.362	F0908500.AGS17	★
A-GS 30	Hi-Q/ERC 20	II	1.181	2.579	F0908500.AGS30	★



Type	For Clamping Nut	TORCO-FIX	inch		EDP Number	
			A	B		
A-E 25	Hi-Q/ERC 25	II, III	2.559	2.835	F0908500.AE25	★
A-E 32	Hi-Q/ERC 32	II, III	2.953	2.835	F0908500.AE32	★
A-E 40	Hi-Q/ERC 40	III	3.543	3.228	F0908500.AE40	★
A-E 50	Hi-Q/ERBC 50	III	4.331	3.701	F0908500.AE50	★

