

A
B
C
D
E
Q
H
K



HYUNDAI-MAN B&W

ENGINE TYPE	6S60MC-C	MAXIMUM CONTINUOUS OUTPUT	
NO. OF CYLINDERS	6	13560 kW	AT 105 RPM
CYLINDER BORE	600 MM	18420 BHP	
STROKE	2400 MM	CONTINUOUS SERVICE OUTPUT	
ENGINE NO.	AA1541	12205 kW	AT 101.4 RPM
		16580 BHP	
		DELIVERY DATE	1982.12.23



HYUNDAI

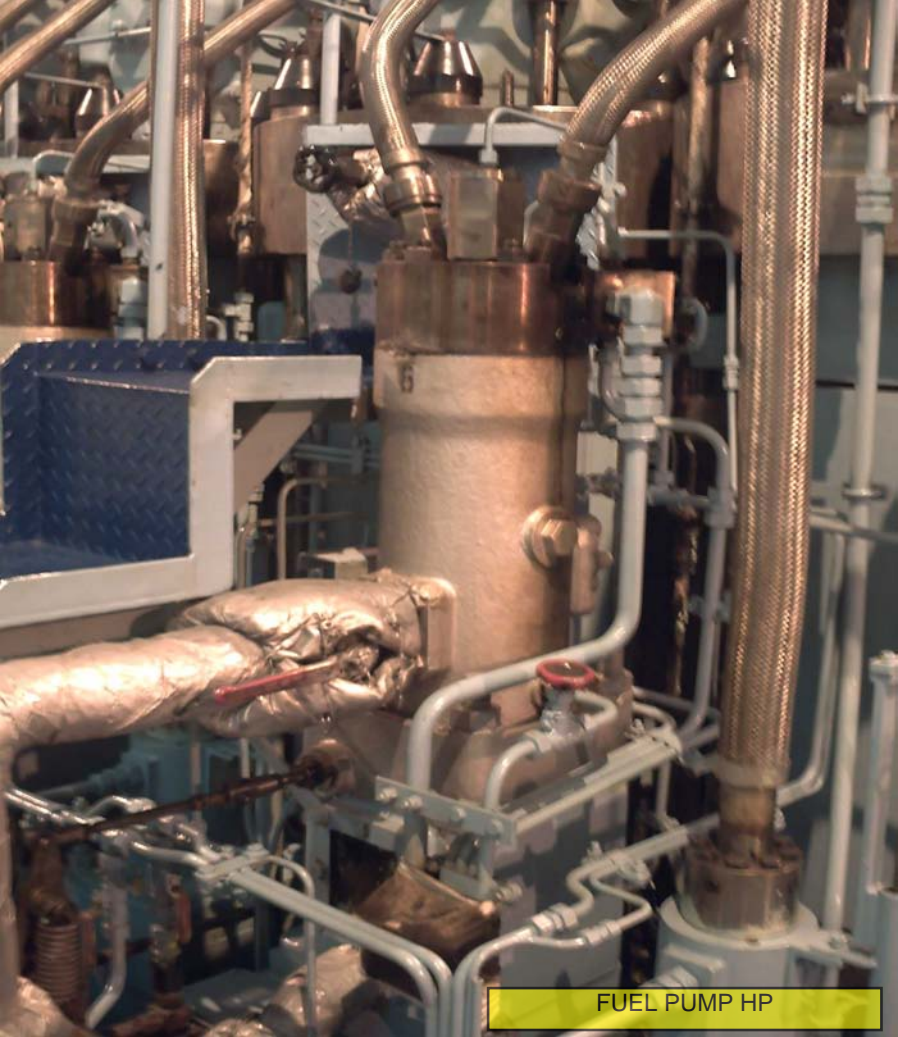
HEAVY INDUSTRIES CO., LTD.
ENGINE & MACHINERY DIVISION



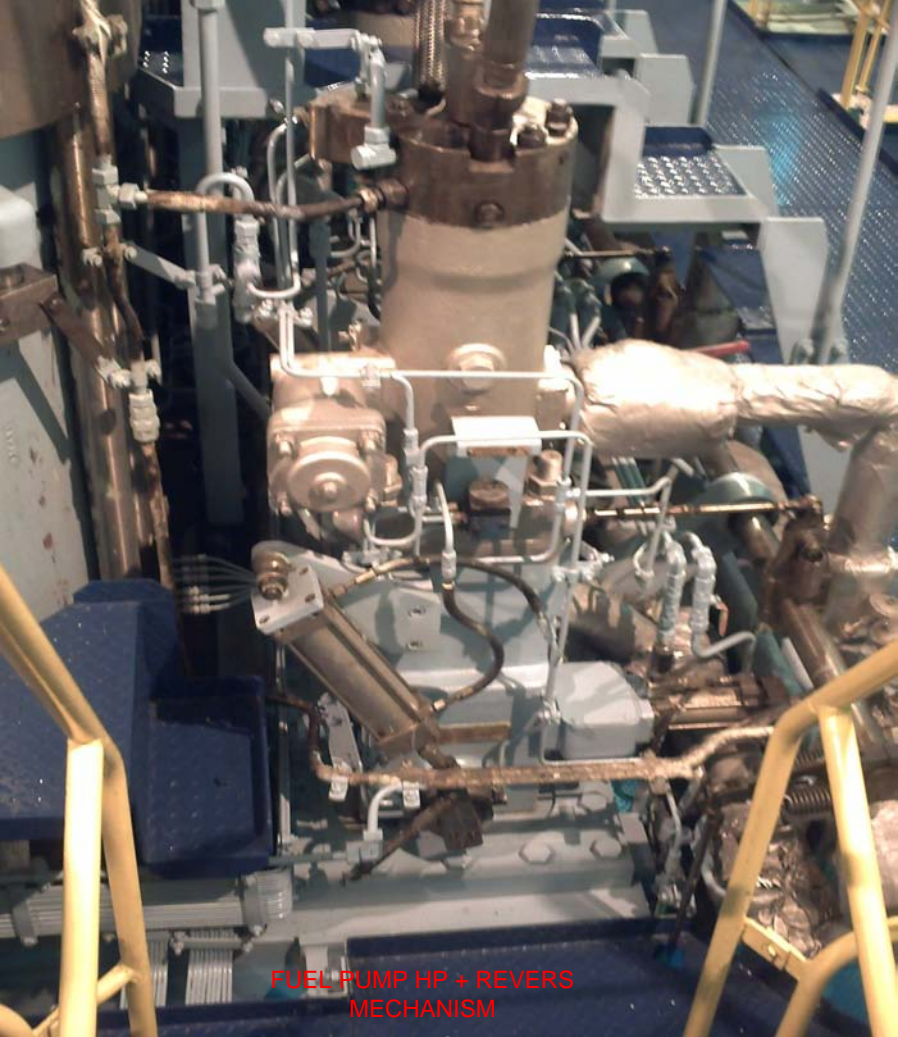
20 L AIR RESERV



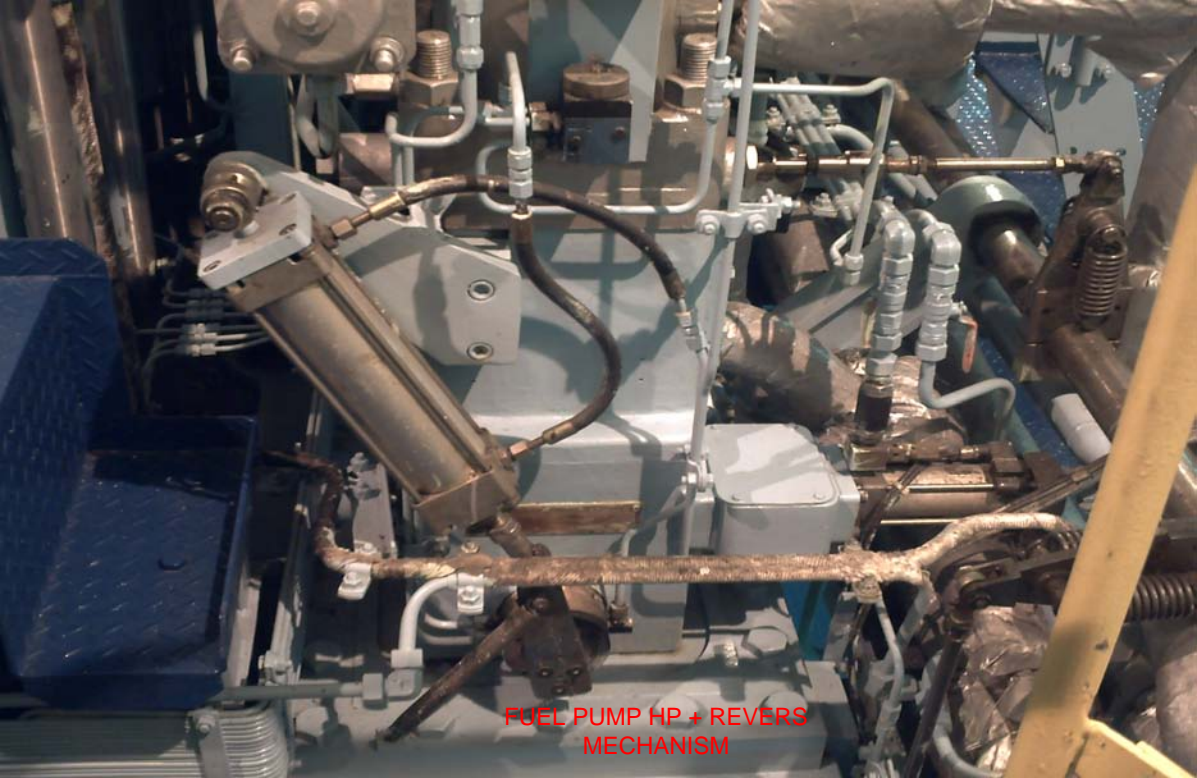
40 L AIR RESERV



FUEL PUMP HP



FUEL PUMP HP + REVERS
MECHANISM



FUEL PUMP HP + REVERS
MECHANISM



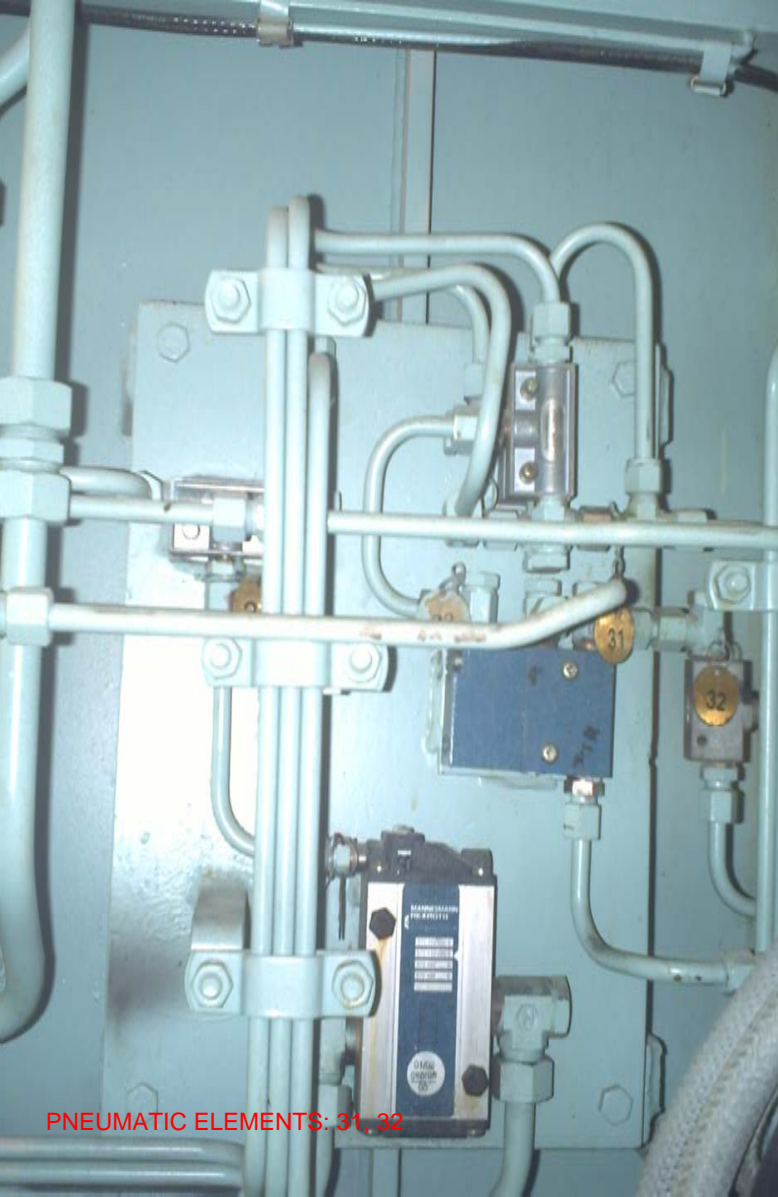
FUEL PUMP HP + REVERS
MECHANISM

PNEUMATIC ELEMENT 26

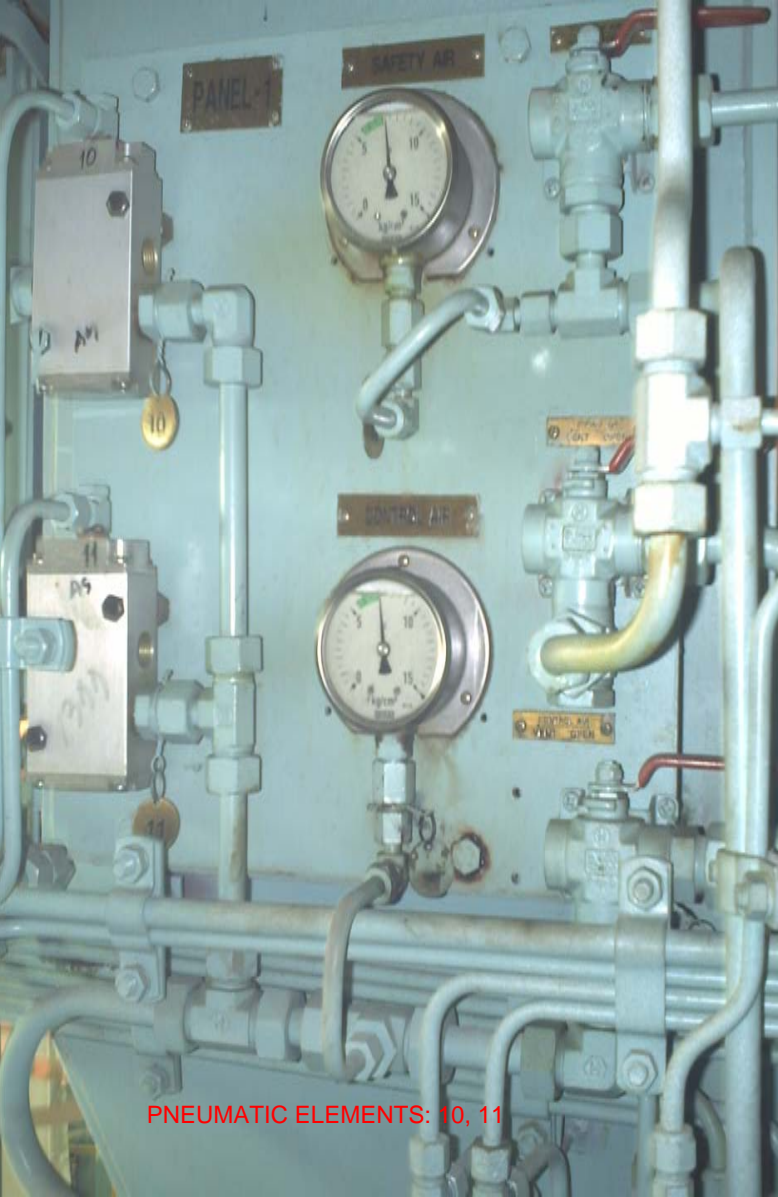




EL.MAGNETIC VALVES
(PNEUMATIC BOX)



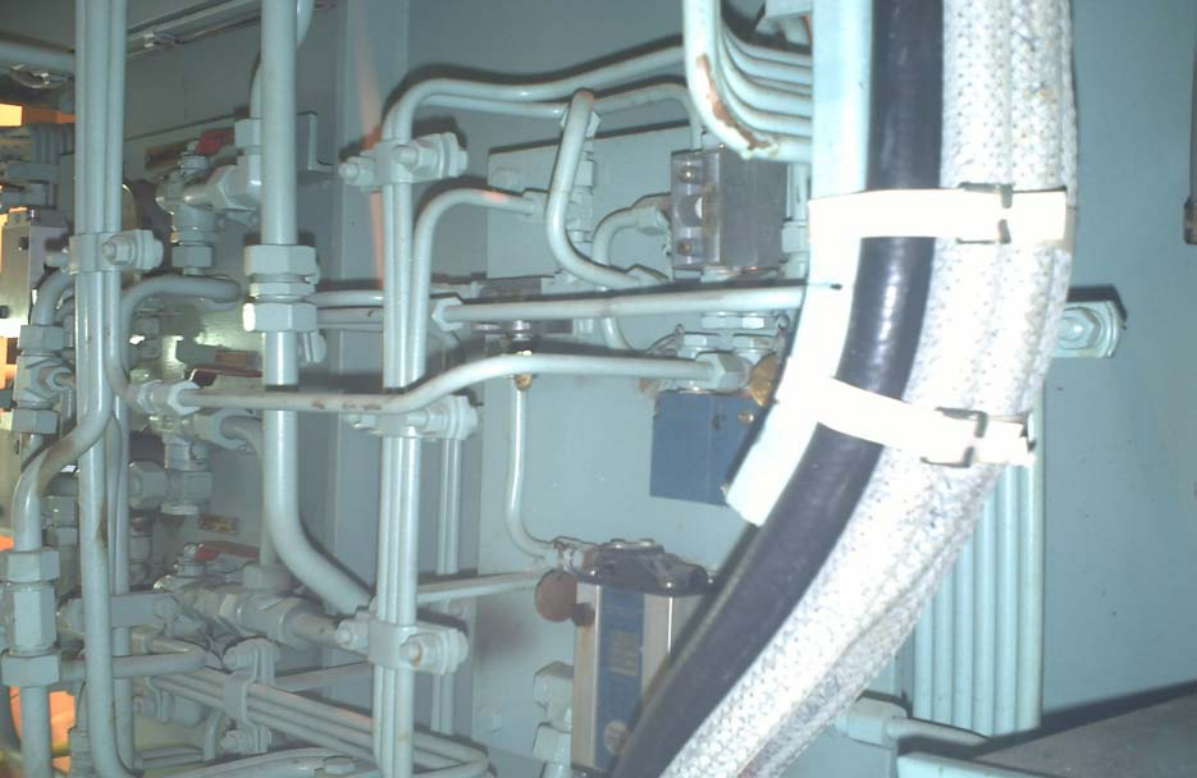
PNEUMATIC ELEMENTS: 31, 32

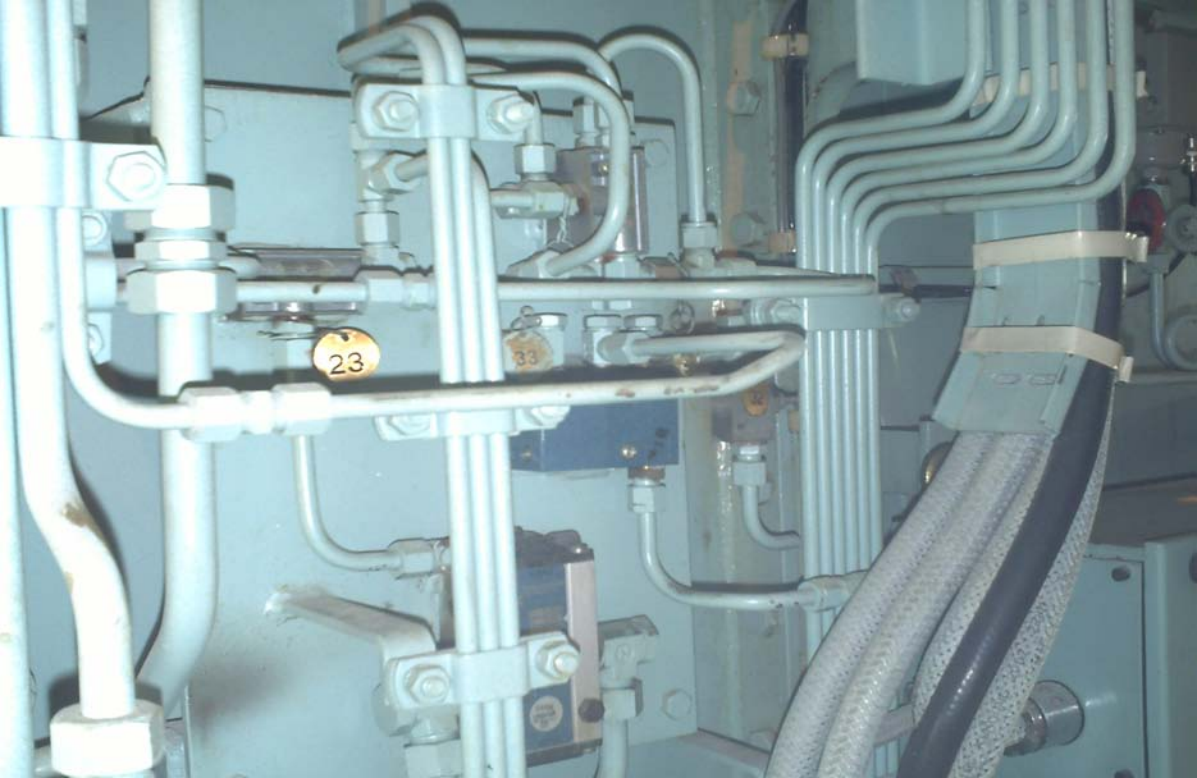


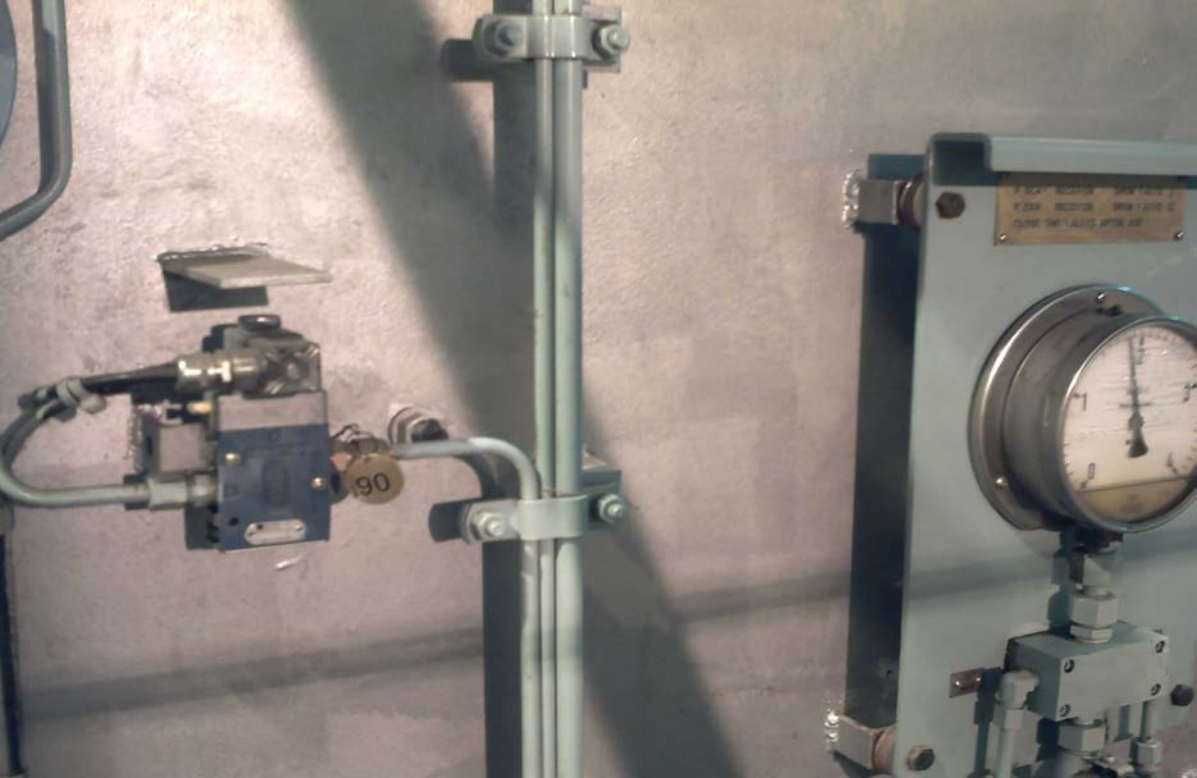
PNEUMATIC ELEMENTS: 10, 11



PNEUMATIC ELEMENTS: 10, 11







LOCAL PANEL: EMERGENCY
CONTROL ME

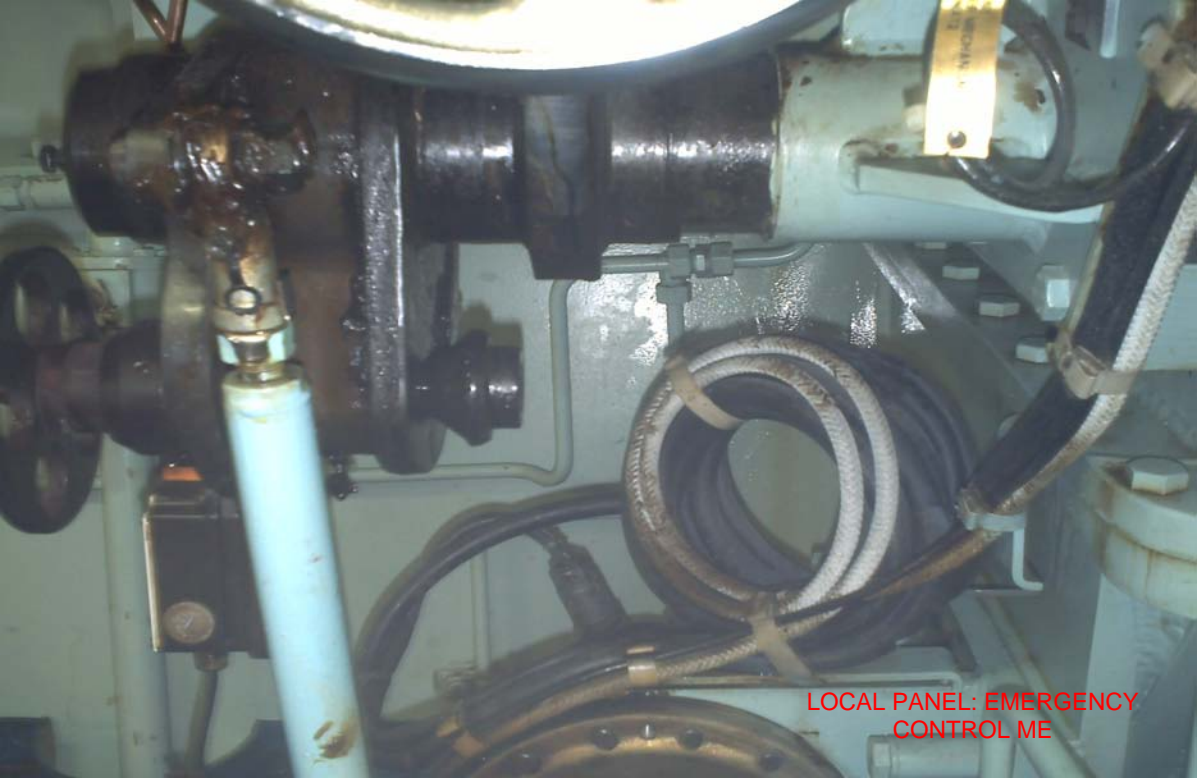
M/E MANEUVERING TABLE (RPM)

REV	FORW	REV	FORW
1000	1000	1000	1000
800	800	800	800
600	600	600	600
400	400	400	400
200	200	200	200
0	0	0	0
200	200	200	200
400	400	400	400
600	600	600	600
800	800	800	800
1000	1000	1000	1000

MANEUVERING TABLE (RPM)



LOCAL PANEL: EMERGENCY
CONTROL ME, GOVERNOR



LOCAL PANEL: EMERGENCY
CONTROL ME

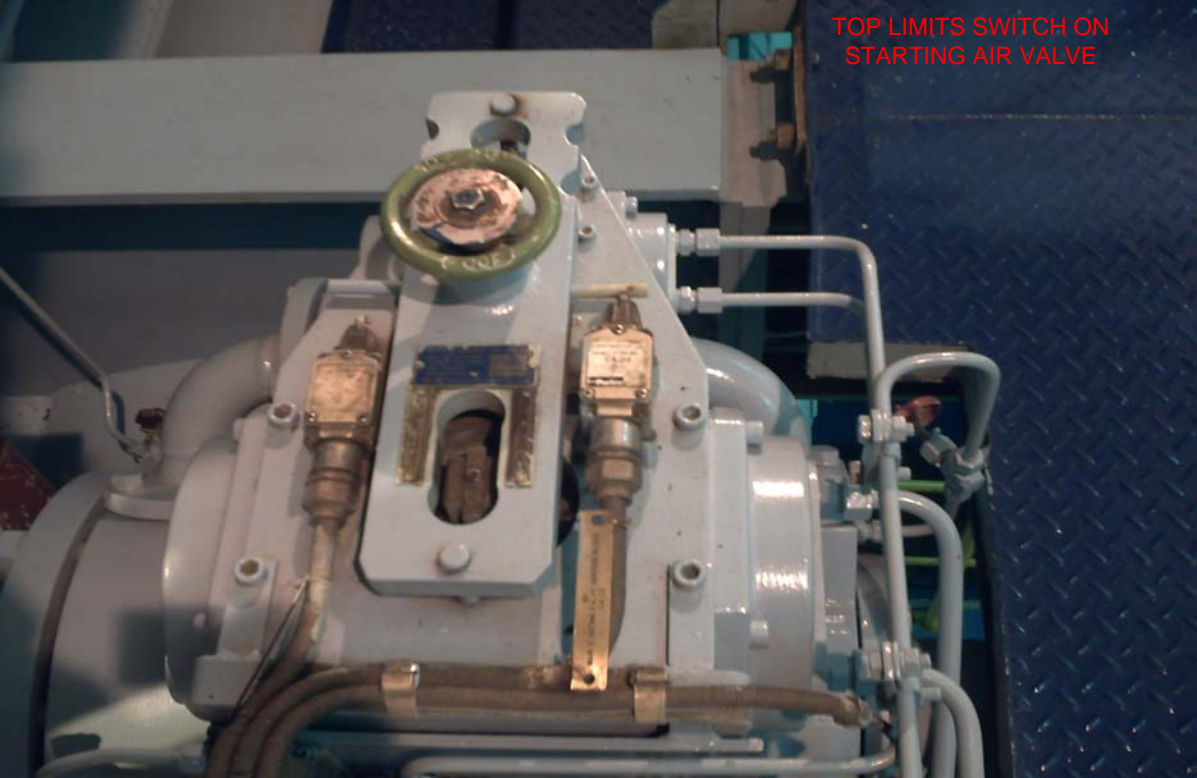
A photograph showing two RPM proximity sensors mounted on a metal panel. The sensors are dark grey rectangular units with two circular ports on their front face. A black cable is connected to the top port of the lower sensor. Above the sensors, there is a light-colored rectangular component with a circular port and a white cable. The entire assembly is mounted on a metal surface, possibly part of a machine's control panel. The background shows some structural elements and wiring.

RPM PROXIMITY SENSORS

The image shows a close-up of a metal structure, likely part of a machine or conveyor system. Two proximity sensors are mounted on the structure. The top sensor is a cylindrical metal probe with a black cable extending from it. The bottom sensor is a similar cylindrical metal probe with a white cable. The metal structure is painted a light blue or grey color and shows signs of wear and rust. In the background, there is a dark metal grate and a white cylindrical pipe. The text "RPM PROXIMITY SENSORS" is overlaid in red at the bottom left of the image.

RPM PROXIMITY SENSORS

TOP LIMITS SWITCH ON
STARTING AIR VALVE





STARTING AIR VALVE



LIMITS SWITCH ON
TURNIG GEAR



LUBRICATORS

AXIAL VIBRATION MONITOR

0.93

(mm)

PEAK TO PEAK DISPLACEMENT

KONECO

KONOH MACH. & ELEC. CO., LTD.